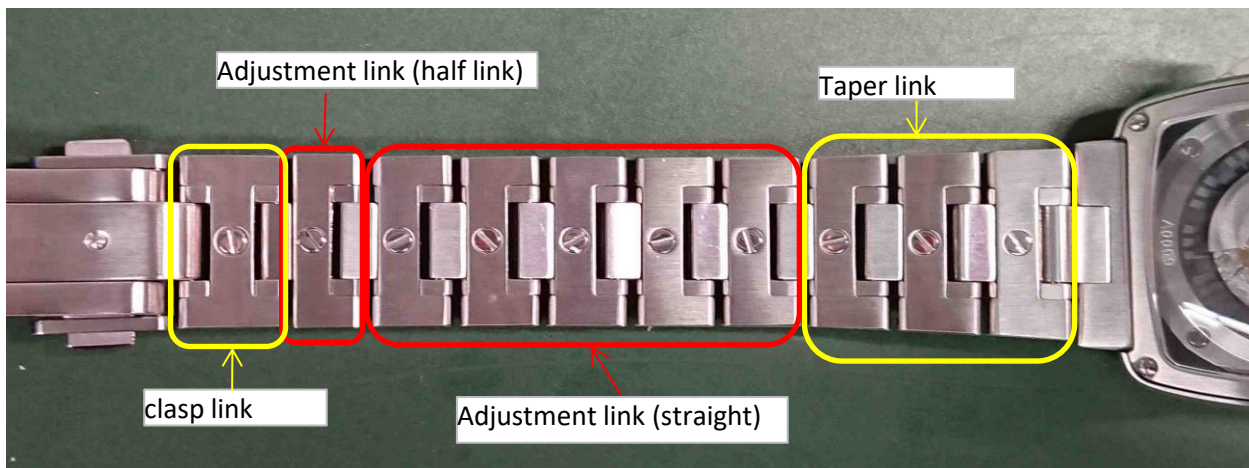


1. Tools

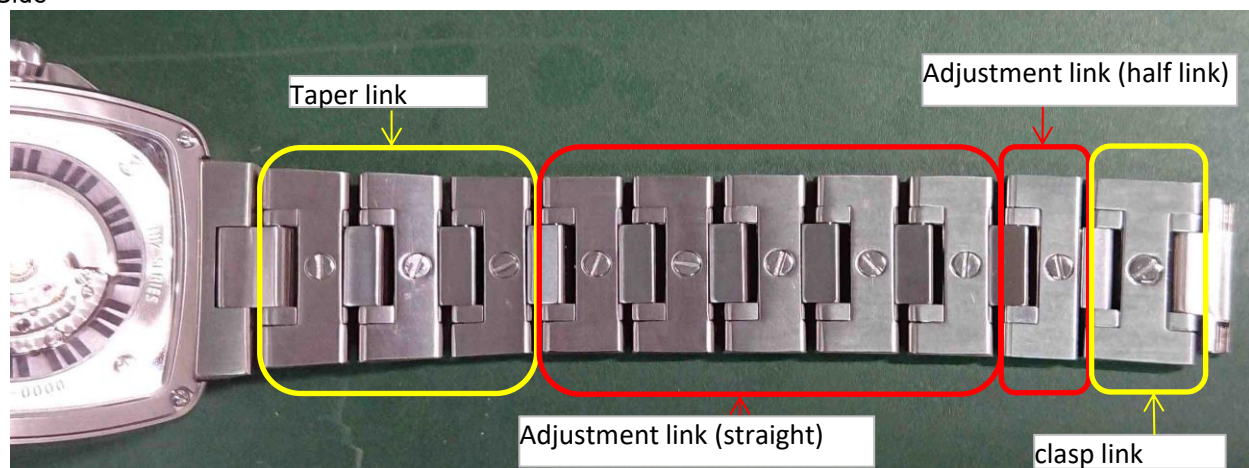
- Screwdriver (ϕ 2.5mm minus)
 - ※ Ideally, there should be no wobbling when the screwdriver is inserted into the drive on the head. Adjust the shape of the tip of the screwdriver in advance.
 - ※ Please note that if you use a screwdriver of the wrong size, there is a risk of deformation or damage to the screw head and drive.
- Tweezers (preferably made of soft material such as brass)
- Spring bar removal jig (preferably ϕ 1.0 minus screwdriver)
- Pin pusher (pin for spring bar removal, etc.) *Prepare as necessary. Tweezers can also be used
- Thread locking adhesive (Loctite 241)

2. Bracelet Structure

6H Side



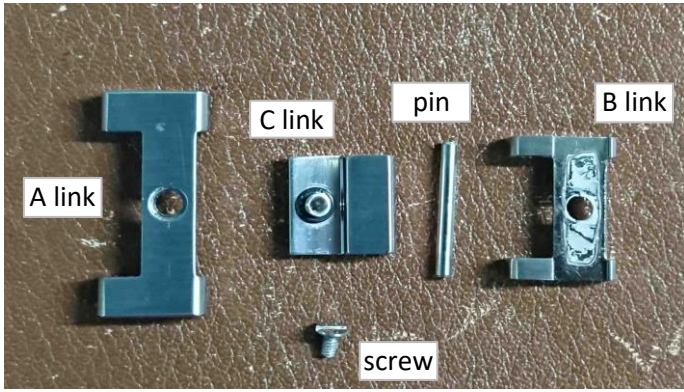
12H Side



When adjusting the links, increase or decrease the links in the **red** frame area, and avoid removing the **yellow** frame area as much as possible. If you have to adjust it, put it back in place when you finish.

3. Link Structure

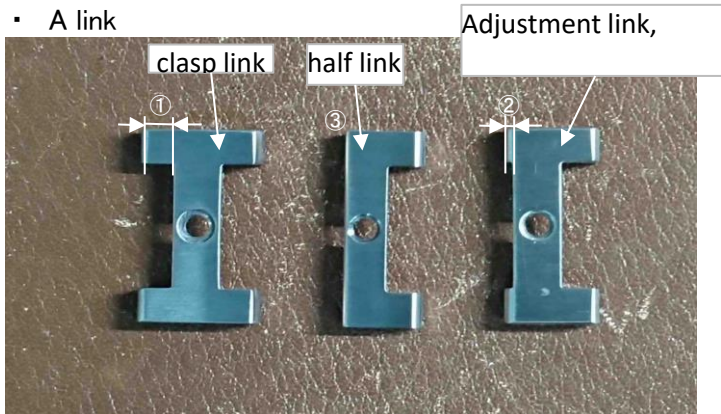
One link consists of 5 parts: A link, B link, C link, pin, and screw. (See 4 for differences between the parts)



4. Differences between parts

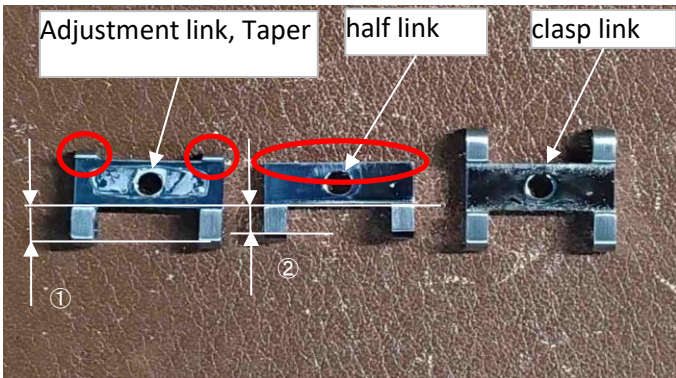
There are differences in 3 out of the 5 parts that make up one link (A, B, and C links), depending on where the assembled link is attached.

• A link



$$\textcircled{1} > \textcircled{2} > \textcircled{3}(=0)$$

• B link



$$\textcircled{1} > \textcircled{2}$$

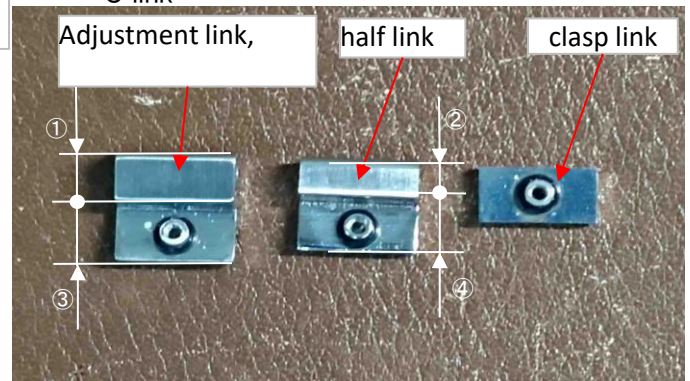
Adjustment link, Taper link:
The part in red circle is high.

half link:
The part in red circle is flat.

clasp link:

It is a totally different shape from the other 2 parts.
(The other side finishing/attachment note (see next page))

• C link



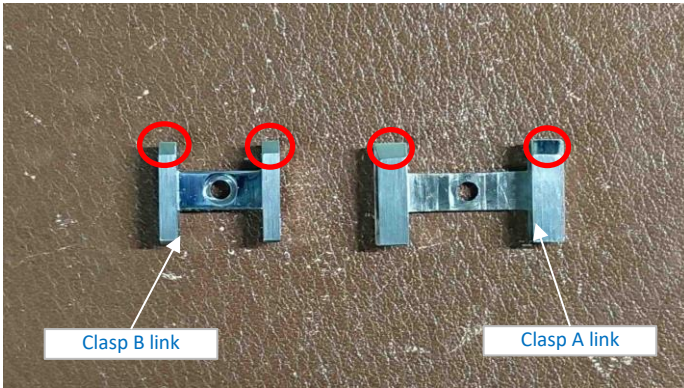
$$\textcircled{1} > \textcircled{2}$$

$$\textcircled{3} > \textcircled{4}$$

Clasp link is in a different shape from the other 2 links

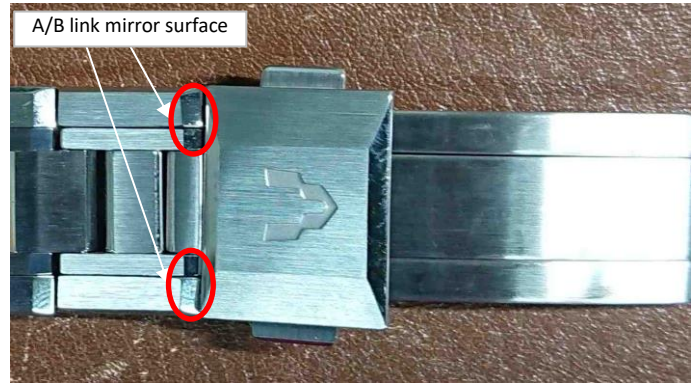
Regarding the direction of Clasp A link, B link

- Surface of the link



The parts in red circle are mirror surface slope

- Clasp link attachment direction



Although there is no direction for Clasp C link, it is recommended to attach it the same direction as when it was removed.

If you install any part in the wrong direction, incidents may occur such as parts falling off, bracelet not bending, or the design changing. Please make sure to install them in the same direction as when you removed them.

5. Others

- There are differences between each link depending on its installed location. (See 4)
If it is installed at a wrong location, it will affect its movement and cause malfunction.
Return each part to the place where you removed it, it will be less likely to be mistaken.

In particular, when removing an adjustment link next to taper link or clasp link, the taper link or clasp link will also be disassembled, please be careful not to attach parts incorrectly during reinstallation.

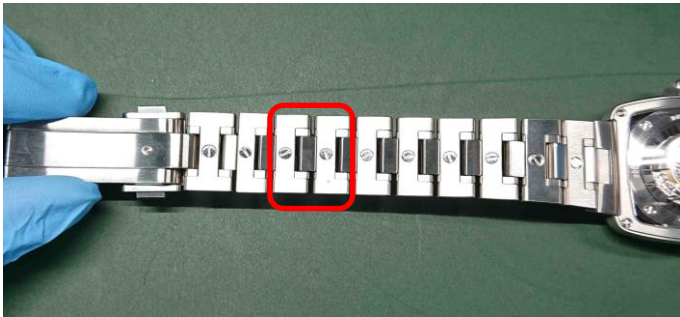
- We recommend Loctite 241 as a thread locking adhesive.
After applying, please tighten the screw firmly, otherwise it may cause link falling apart.

Link Adjustment Procedure

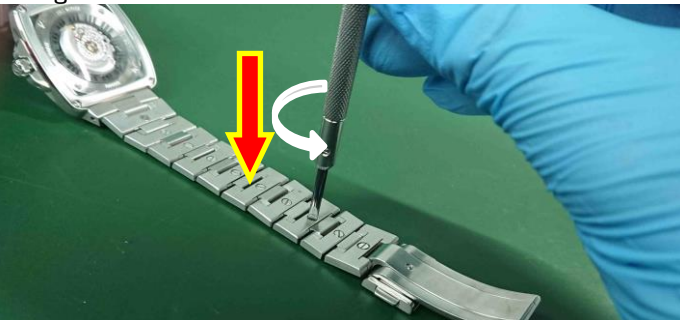
- ① Remove the spring bar from the bracelet clasp.
- The spring bar must be removed by tool.
 - Be aware that the spring bar may pop out.
 - To prevent scratches from tools or spring bars, we recommend protection by tape, etc.



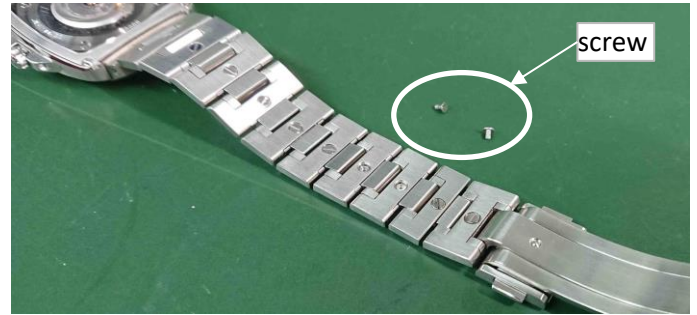
- ② After laying down the bracelet, confirm which part to be removed. To remove one link, remove two nearby screws.



- ③ Insert the screwdriver into the drive and turn it while pressing down (counterclockwise).
- When adjusting for the first time, it is very hard and requires some force. When turning a screw, be sure to press firmly downwards.
 - If the pressing force is insufficient, the screw head may be damaged.



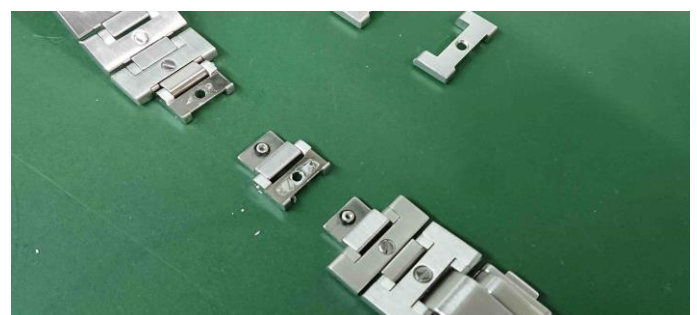
- ④ remove the screw



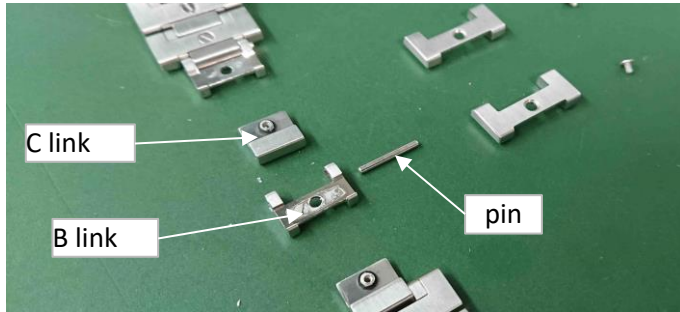
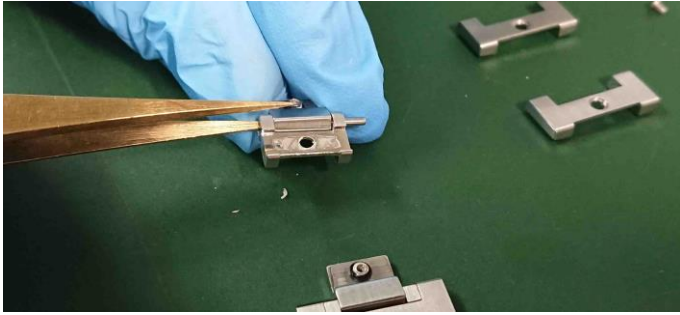
- ⑤ While holding down the nearby links, remove the A link from the link you removed the screw from. If it is hard due to the adhesive, remove the A link by prying it up.



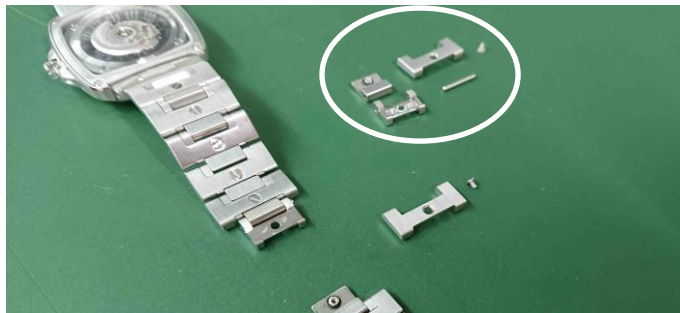
- ⑥ Separate the assembly of B link, C link, and pin.



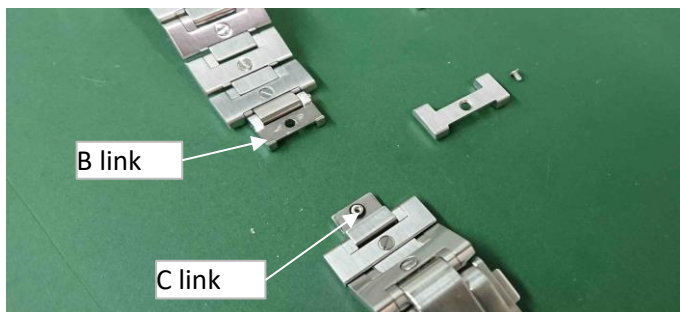
⑦ Remove the pins from the link using tweezers or a pin puller, and separate the B link, C link, and pin.



⑧ Set aside the 5 parts (for one link): B link, C link, pin in ⑦, and A link screw removed in ④⑤.



⑨ Connect the remaining band links B and C.



⑩ Attach A link

• Reinstall parts the same direction as you removed them, as they all have directions.



⑪ Install the screws.

- **Use Loctite 241 for thread locking.** Apply thread locking adhesive to both the male and female threads, and tighten the screws firmly.

For details on the thread locking adhesive usage, please refer to the attached ~~✗~~ document "Types of thread locking adhesive and amount of application".



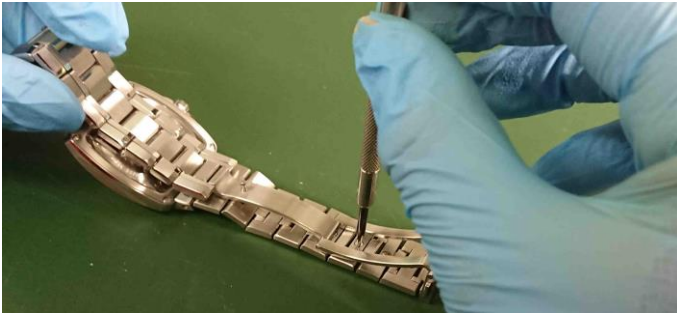
⑫ The links are connected



⑬ Finally, put back the spring bar removed in ① and complete.

①、When it is difficult to attach and detach the spring bar in ⑬

If it is difficult to attach and detach the spring bar in adjustment steps ① and ⑬, fold the brace as shown below, and you can access the link screw between the ladder of the clasp, then spread open the bracelet.



Regarding the type and amount of thread locking adhesive usage

•Types of thread locking adhesive

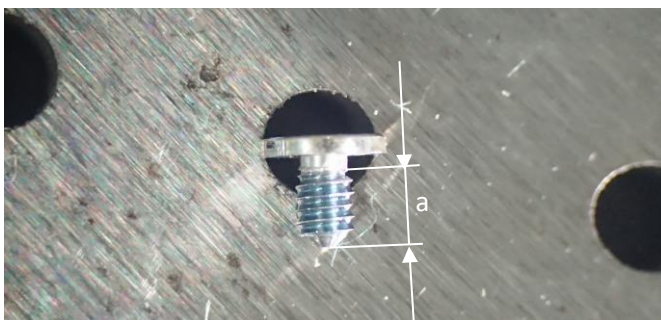
Use **Loctite 241** as shown in the photo for thread locking adhesive.



•Application amount

Make sure to apply the thread locking adhesive to both the male and female threads. Use the amount shown in the photos as a reference.

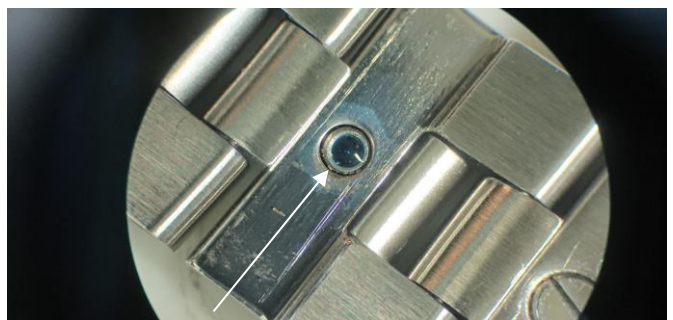
○male thread



More than half of the entire thread should be coated.

Threadlock adhesive amount $\geq a/2$

○female thread

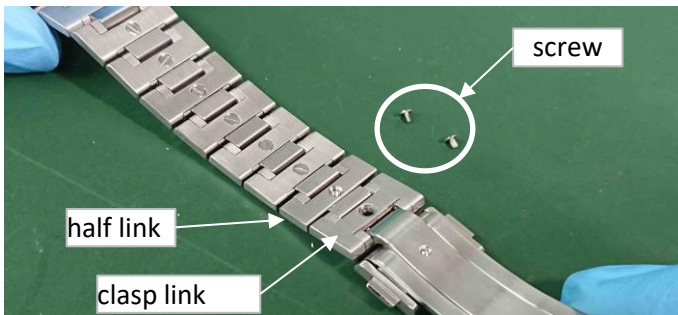


Apply it evenly inside the female thread.
(In the photo A link was removed to make it easier to see)

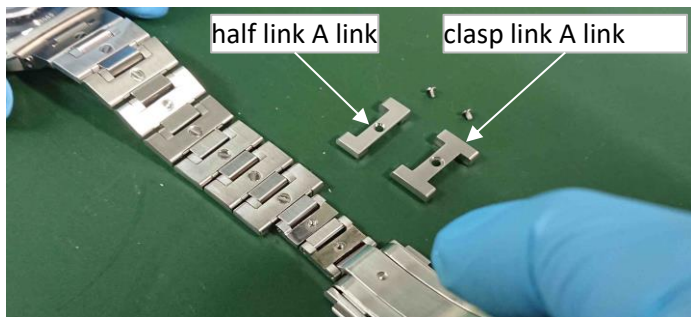
Half link adjustment procedure

Be sure to attach the Half link next to the Clasp link.

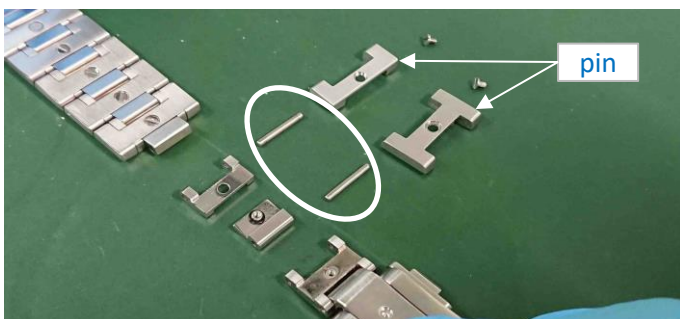
① Remove the half link screw and the clasp link screw



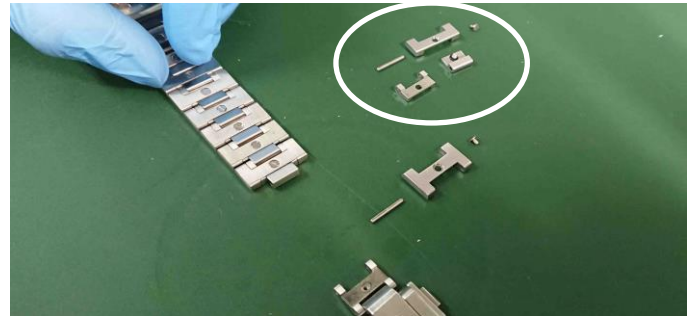
② Lift up the A link of the half link and clasp link to remove it.



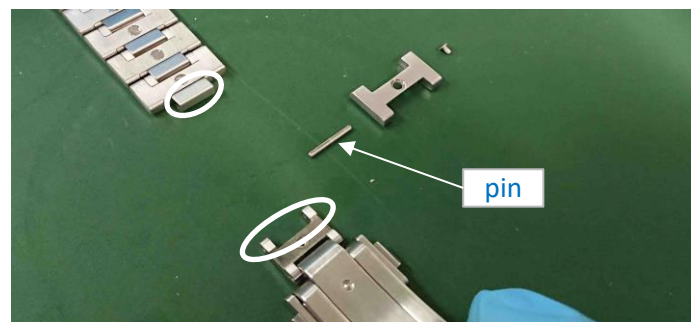
③ Remove the pin from the connection, and disassemble Half link's B and C link.



④ Remove the connection (the half link's B link, C link) separated in ③, put aside the half link's A, B, and C links, pin and screws.



⑤ Connect the parts in white circle by the pin.



⑥ Attach clasp link's A link.

• The clasp link's A link has a predetermined direction.

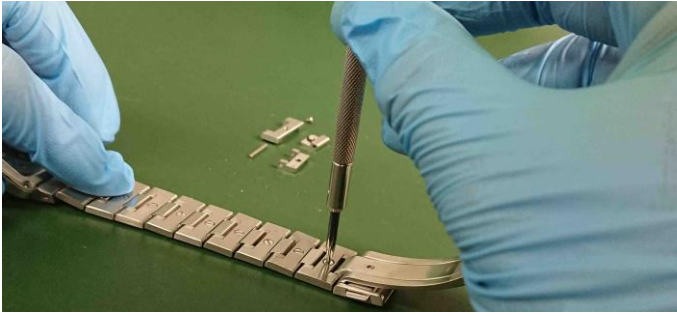
Please attach it in the same direction as when you removed it.

• Warning: Never attach an A link other than Clasp link's A link.



⑦ Install the screws

- Apply thread locking adhesive to both the male and female threads and screw them in.
- **Use Loctite 241 as the thread locking adhesive.**
- Tighten the screws tightly to prevent them from loosening.



⑧ Finish

